



ASHE 2025 National Conference

Kalahari Resorts
Pocono Manor, PA
June 4 - 8, 2025

EXHIBIT SPACES ARE NOW AVAILABLE!

- ⇒ If you would like to participate as an exhibitor at the ASHE 2025 National Conference, please fill out and return this form. For up to date conference details, please visit our website at: 2025conference.ashe.pro
- ⇒ The exhibitor fee is \$1,200 and includes two (2) complementary conference registrations (registration only- additional fee events are not included).
- ⇒ Exhibit space consists of a 8'x10' pipe and drape booth with 6' skirted table, 2 chairs, 110v 20amp power, wi-fi access, and standard head sign bearing your company name.
- ⇒ Double booths are available for a price of \$2,000, but do not include any additional conference registrations.
- ⇒ Payment for reserved booths must be received by April 30, 2025 to ensure inclusion in conference publicity and program book.

Fill out and return this form by email to fsumma@gpinet.com or by mail to:

Greenman Pedersen, Inc.
Attn: Frank Summa / ASHE 2025 National Conference
52 Glenmaura National Blvd., Suite 302
Scranton PA 18505

For additional information, contact: Frank Summa at 570-880-7342 or fsumma@gpinet.com

TOTAL DUE Make checks payable to 2025 ASHE National Conference

Please check one: \$1,200 for single booth _____ \$2,000 for double booth _____
⇒ Make checks payable to "**2025 ASHE National Conference**"

BOOTH PREFERENCE (see enclosed exhibit floor plan)*

First Choice _____

Second Choice _____

Third Choice _____

CONTACT INFORMATION

Company Name: _____

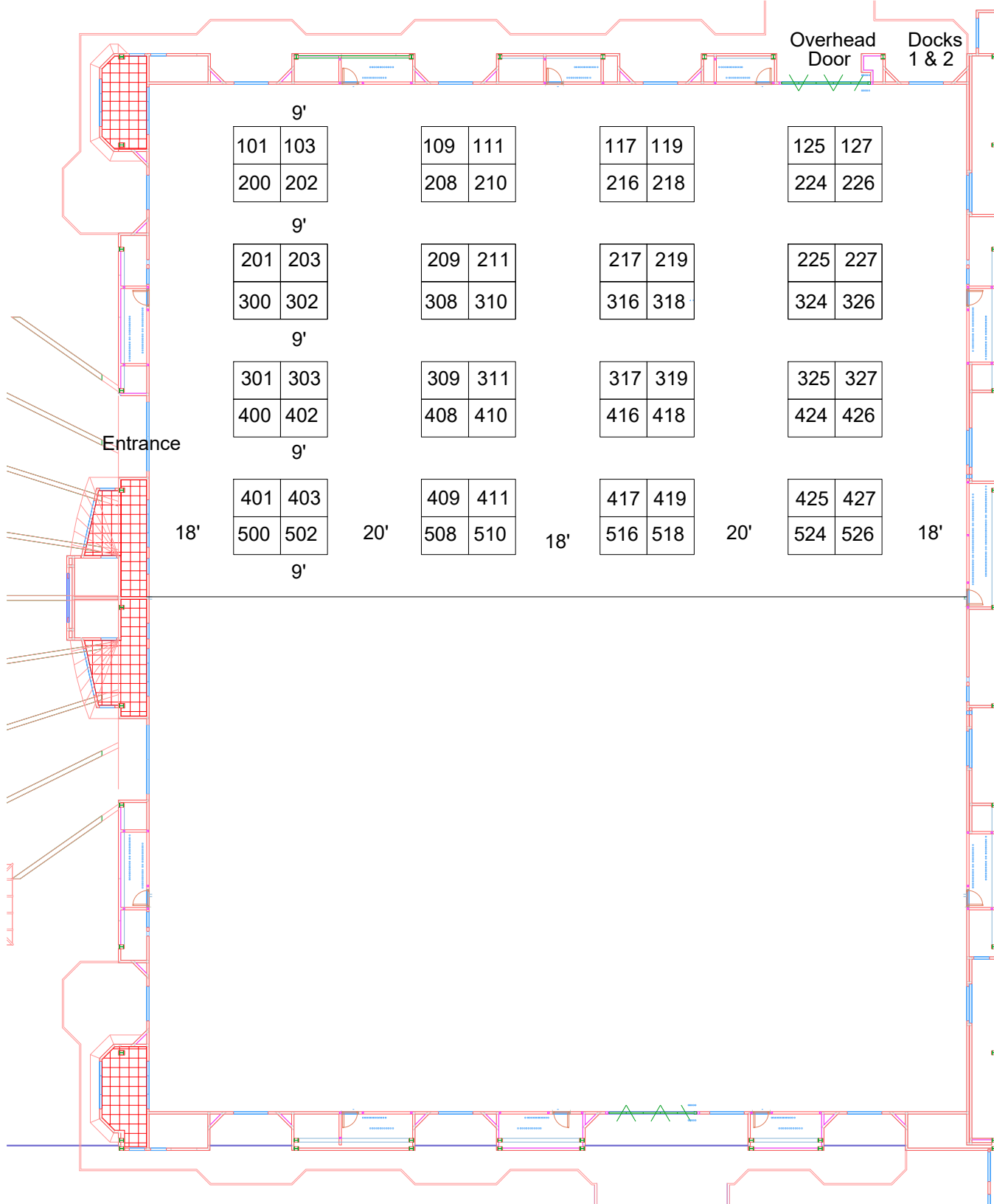
Exhibit Booth Representative Name: _____

Company Address: _____

Phone: _____ Email: _____

Signature: _____

*Booths will be assigned as payment is received. Booth layout is subject to change. We will do our best to match your choice with respect to any revised layout.



ASHE 2025
June 5 & 6, 2025
Kalahari Resort
Kilimanjaro Ballroom -
2,7,8,9,10

Prepared by:

**General Exposition
 Services**

THE TRADE SHOW SERVICE CONTRACTORS

www.generalexposition.com

610-495-8866 Phone

6.12.24 C. McKenrick

64 - 8x10 Booths

Please note: Every effort has been made to ensure the accuracy of all the information contained on the floorplan. However, no warranties are made with respect to this floorplan. If the location of building columns, utilities or other architectural componets of the building is a factor in the construction or usage of an exhibit. It is the sole responsiblity of the exhibitor to physically inspect the facility to verify all dimensions and locations.